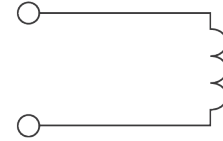
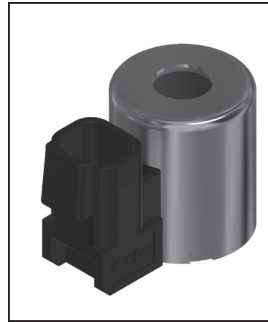


CV	Check Valves
SH	Shuttle Valves
LM	Load/Motor Controls
FC	Flow Controls
PC	Pressure Controls
LE	Logic Elements
DC	Directional Controls
MV	Manual Valves
SV	Solenoid Valves
PV	Proportional Valves
CE	Coils & Electronics
CB	Cartrpak Bodies
BC	Bodies & Cavities
TD	Technical Data

Features

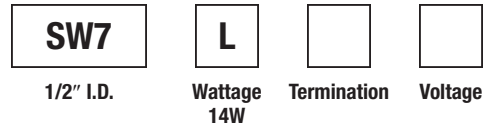
- For utilization on **EPR083R** product only
- Integral Deutsch connector coil exceeds IP69K standards
- Integral Deutsch connector coil thermal shock dunk test rated
- Coil hermetically sealed, requires no O-rings or waterproofing kits
- Coil shell is zinc plated, low carbon steel
- Symmetrical coil can be reversed without affecting performance



Specifications

Nominal Wattage	L 14 Watts
Duty Cycle	Continuous @ 100% voltage
Lead Wire	(12 VDC) 22 gauge 24" long (24 VDC) 22 gauge 24" long
Magnetic Wire Insulation Class	'N' Rated at 200°C (392°F)
Temperature Range	-40°C to +200°C (-40°F to +392°F)
Encapsulating	Glass-Filled Polyethylene Material Terephthalate (PET)
Weight	0.29 kg (0.64 lbs.)

Ordering Information



Code	Wattage
L	Standard, 14W

Code	Termination
H	Integral Deutsch
W	Double Lead
S	Double Spade

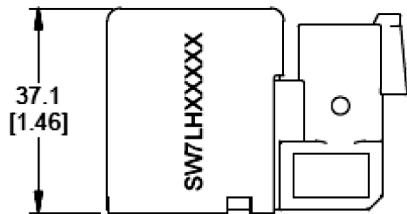
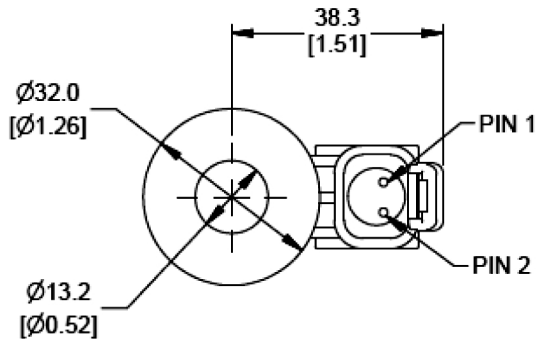
Code	Voltage				
	Volts	Watts (Ref)	Amps (Ref)	Ohms* (Ref)	Lead Wire** Color
D012	12VDC	14.2	1.2	10.1	Red
D024	24VDC	14.5	0.6	39.6	Blue

*Resistance ±5% at 68°F

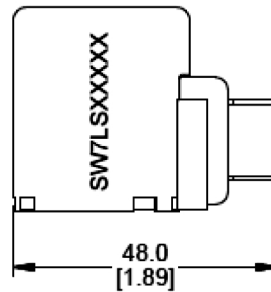
**Applicable to W Double Lead Termination

Note: Additional voltages and other terminals are available.
 For details please consult factory.
 Deutsch Mating Connector: # DT06-2S

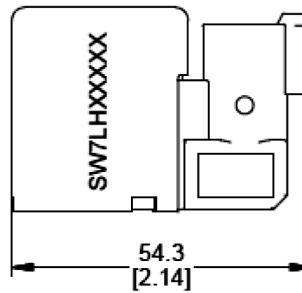
Terminal Styles and Dimensions



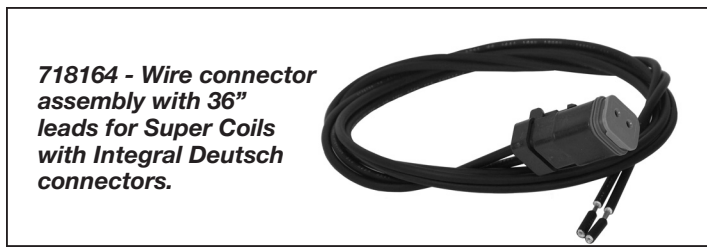
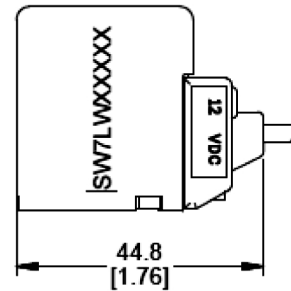
S - Double Spade



H - Integral Deutsch



W - Double Lead



CV
Check Valves
SH
Shuttle Valves
LM
Load/Motor Controls
FC
Flow Controls
PC
Pressure Controls
LE
Logic Elements
DC
Directional Controls
MV
Manual Valves
SV
Solenoid Valves
PV
Proportional Valves
CE
Coils & Electronics
CB
Cartpak Bodies
BC
Bodies & Cavities
TD
Technical Data